

# 天津源美脚手架有限公司

TIANJIN WELLMADE SCAFFOLD CO., LTD

No. 1 Guangyuan Rd., Tangguantun Industrial and Logistic Zone, Jinghai County, Tianjin, China

## 产品质量报告

## STEEL MATERIAL TEST REPORT

合同号 (Contract No.): C00733	客户订单号 (Po NO.): 4513513600	生产订单号 (Job No.): WMYQ191118
客户材料代码 Item No.: 1002453019	炉号 Furnace Number: H-01519	版本号 Version Number: WM 2020060819
产品名称 Product Name: 4.0m 无挂钩踏板 Steel Board	执行标准 Standard: BS EN12811-1、GB/T3274	数量 Quantity: 970

### 1、测试项目 Test item

### 化学成分分析 Chemical Composition Analysis

材质 Material	元素 Element	碳 C	锰 Mn	磷 P	硫 S	硅 Si	结论 Conclusion
Q235	要求 Req., %	≤0.20	≤1.4	≤0.040	≤0.045	≤0.25	---
	结果 Result, %	0.0	0.40	0.020	0.033	0.17	合格 Pass

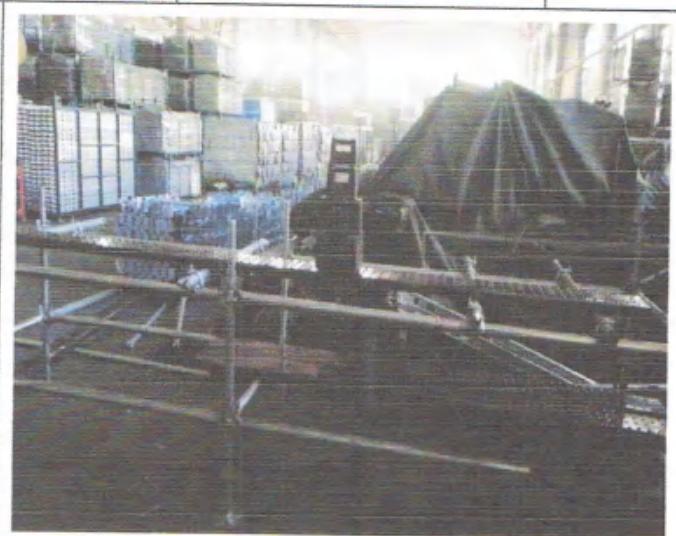
### 2、测试项目 Test item

### 拉伸试验 Tensile Test

材质 Material	测试项目 Test item	屈服强度 Yield Strength (Rm) (Mpa)	抗拉强度 Tensile Strength (ReH) (Mpa)	伸长率 Elongation after (A) (%)	结论 Conclusion	
Q235	要求 Req.	≥235	≥350	≥26	---	
	结果 Result	1	240	362	40	合格 Pass
		2	244	358	41	合格 Pass



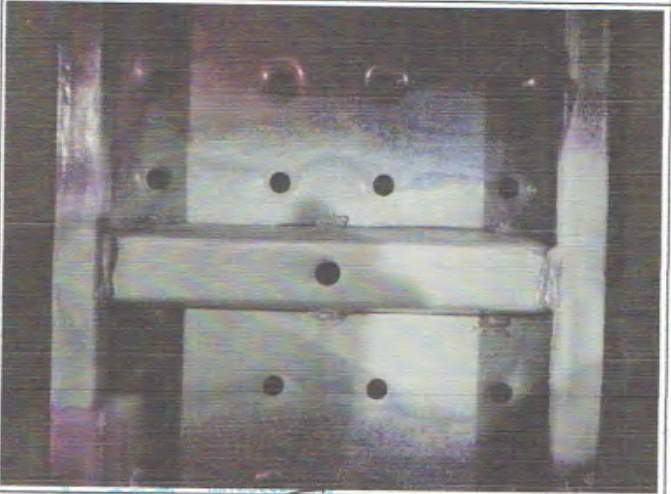
3、测试项目 Test item		承载力测试 Bearing capacity test			
测试项目 Test item	跨度 Test span	负载值 Value of Load	标准要求 Standard requirements	测量结果 Result	结论 Conclusion
集中负载面积 Concentrated load on area 500*500mm	1.5m	1.50KN	在踏板 500*225mm 的面积上集中负载指定力, 踏板变形尺寸不得超过 15mm. The platform unit shall be capable of supporting the concentrated load on area 500*225mm and the deflection at the center of span shall not exceed 15mm.	在踏板 500*225mm 的面积上集中负载标准力, 踏板变形尺寸为 11.34mm. The platform unit was capable of supporting the concentrated load on area 500*225mm and the deflection at the center of span was 11.34mm.	合格 Pass
集中负载面积 Concentrated load on area 200*200mm		1.00KN	在踏板 200*200mm 的面积上集中负载指定力, 踏板变形尺寸不得超过 15mm. The platform unit shall be capable of supporting the concentrated load on area 200*200mm and the deflection at the center of span shall not exceed 15mm.	在踏板 200*200mm 的面积上集中负载标准力, 踏板变形尺寸为 10.64mm. The platform unit was capable of supporting the concentrated load on area 200*200mm and the deflection at the center of span was 10.64mm.	合格 Pass



天津源美脚手架有限公司  
Tianjin Yumei Scaffolding Co., Ltd.  
2020.6.16

SGS WITNESSED  
REVIEWED  
NOTED FOR INFORMATION ONLY  
SGS-CSTC STANDARDS TECHNICAL  
SERVICES CO., LTD  
2020.6.16

4、测试项目 Test item	焊缝检测 dye penetrant inspection		
表面状态 Surface state	良好 ok	检测部位 Detection site	焊缝 Weld seam
渗透剂种类 Type of penetrant	着色渗透剂 Dye penetrant	检测类型 Detection type	EN571-1-IICe-2
渗透剂施加方法 Penetrant application method	喷 Spurt	渗透时间 Penetration time	20min
显像剂施加方法 Method of application of imaging agent	喷 Spurt	显像时间 Display time	5min
检测比例 Detection ratio	100%	合格级别 Qualification level	I
检测部位缺陷情况 Check for defects at the site	无	缺陷类 Defect class	无
检测标准 Standard	EN571、NB/T47013.5-2015		



天津源美脚手架有限公司  
Yuanmei Scaffolding Co., Ltd.  
2020.6.16

REVIEWED  
NOTED FOR INFORMATION ONLY  
SGS-CSTC STANDARDS TECHNICAL SERVICES CO., LTD  
INC007

2020.6.16

5、测试项目 Test item		尺寸测量 Dimension Measurement (单位 Unit: mm)			
名称 Name	测试项目 Test item	标准规定 Nominal value	允许偏差 requirements	测量结果 Measure Result	结论 Conclusion
C型钢 C type pipe	外观 Appearance	表面光洁 The tubes shall a smooth external surface	---	符合要求 OK	合格 Pass
	壁厚 Wall thickness	1.5	±0.1	1.49	合格 Pass
	长度 Length	4000	±5	4001	合格 Pass
	宽度 wide	225	±3	225	合格 Pass
	高度 highly	38	±2	39	合格 Pass
防滑孔 Non-slip hole	孔径 Aperture	10	±1	9.7	合格 Pass
	孔翻边	高出板面 Raised surface	---	符合要求 OK	合格 Pass
	孔距 hole spacing	50-60	±2	符合要求 OK	合格 Pass
结论 Note		经检验, 产品质量符合 BS EN12811-1 标准要求。 (Raw Material Meet Up BS EN12811-1 Standard).			
检验员 Inspector		审批 Approve		制表时间 Tabulation time	
王月庆 Yue Qing Wang		陈亚雷 ChenYaLei		2020-06-08	

天津源美脚手架有限公司  
Tianjin Yumei Scaffold Co., Ltd.  
2020-6-16

SGS WITNESSED  
REVIEWED  
NOTED FOR INFORMATION  
SGS-CSTC STANDARDS TECHNICAL  
SERVICES CO., LTD.

2020.6.16